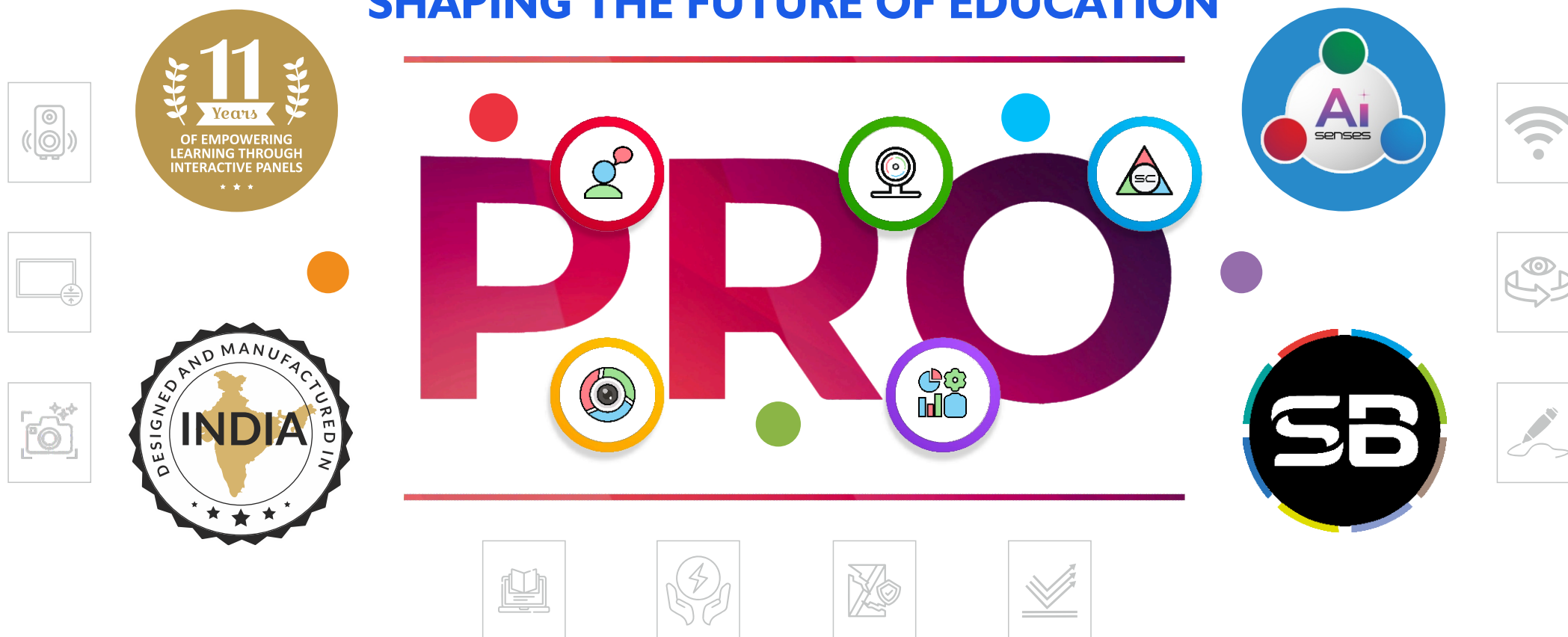


AI-ENABLED FUTURISTIC INTERACTIVE PANELS, SHAPING THE FUTURE OF EDUCATION



SENSEPRO™



AI Enhanced 48 MP 4K
Camera (Optional)



8-Microphone Array with
AI Noise Cancellation



Fingerprint Scanner
for Access Control

Today's educational scenario which is in a transitional mode makes it imperative for the students and the educators to be armed with the latest Ai aided tools to conquer the ever-evolving study material and Senses AI makes their life so easy that they don't have now to sweat over the technical jargon of today and days to come in the ever-changing syllabus. With Senses AI tool, educators of all levels are armed with the capability to simplify the teaching technique and make the students in front grasp and unknot the otherwise complications and knots of the subjects enabling them to feel the process of teaching and learning much easier and satisfying.

INNOVATIVE | ILLUSTRATIVE | INTERACTIVE

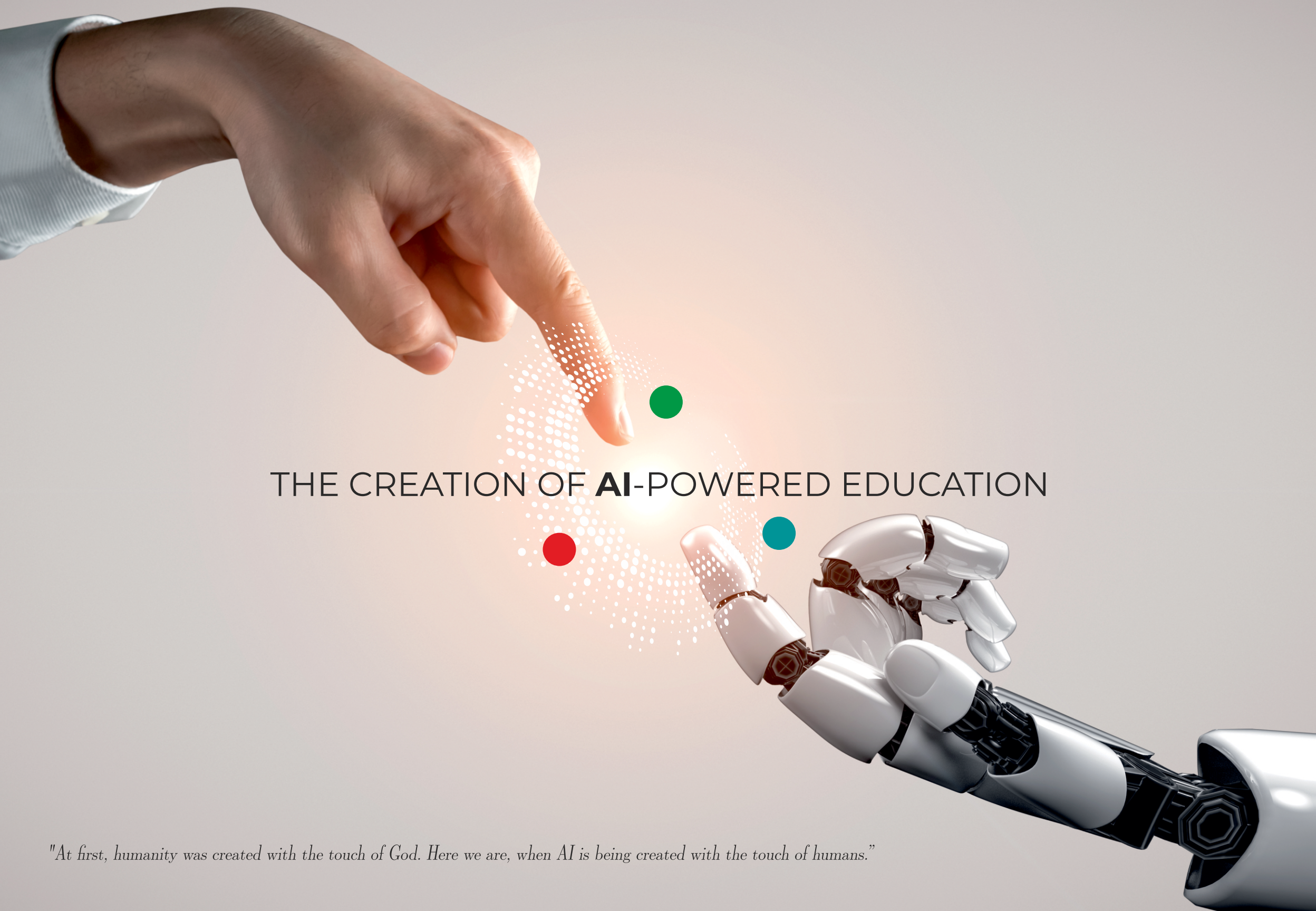
THE SENSES APPROACH



Senses Electronics Pvt. Ltd. is evolving as a fountainhead of innovative, creative and productive activities to develop a never so far available platform, totally revolutionized to make teaching and learning at cutting edge levels an easy task. It is our promise and real assurance that we would stand by our educators and dear students to convert tomorrow's classrooms more engaging and absorbing, paving way for their total success in the quest for excellence.

- **100000+** PANELS INSTALLED
- **8000+** INSTITUTION TRUSTED US
- **70% MARKET SHARE***

(*70% market share in private sector)



THE CREATION OF **AI**-POWERED EDUCATION

"At first, humanity was created with the touch of God. Here we are, when AI is being created with the touch of humans."

ADAPTIVE & INNOVATIVE AI-POWERED LEARNING

Text/Shape
Recognition With
Measurement



Multi Language
Translation



Quick Search
on Google, Youtube



Image, Video,
PDF file Insertion



Live video
Inputs



3D Shapes



AI Magic Pen



AI Curriculum
Navigator



AI Search



AI feature generating answers, images, translations, and questions can be asked in multiple Indian languages.

Senses Utility Suite

Manage your Education System Effortless



SENSETALK™

Seamless Classroom
Communication



SENSEWATCH™

Real-Time Classroom
Monitoring



SENSECONNECT™

Wireless Screen Sharing
Made Easy



SENSEMANAGE™

Efficient Centralized
Control



SENSECAPTURE™

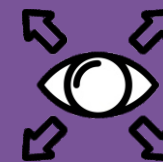
Advanced Screen
Recording Capabilities



Powerful 2.1 channel sound using 2 front facing speaker & down firing Bose sub-woofer



Whiteboard giving sharp, natural writing experience



Wide viewing angle upto 178 degree



Energy saving design, Max 300W, with OPS consumes <0.5W on standby



Anti-glare coating to absorb up to 80% of light



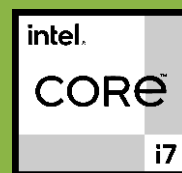
In-built Wi-Fi 6, Ethernet & Bluetooth 5.2



Android version 14

(Upgradable)

Robust Android with an impressive benchmark score of 1300+(Geekbench)



Built-in state-of-the-art i7 CPU 12th Gen



Easy Wireless connectivity with laptops and mobile devices



Open platform, compatible with all e-learning contents



Supports any pen as small as tip of a ball pen



In-built WiFi access point

World's thinnest bezel interactive Panel with complete metal body



NFC Reader



Toughened glass protection

WHAT MAKES US STAND APART?

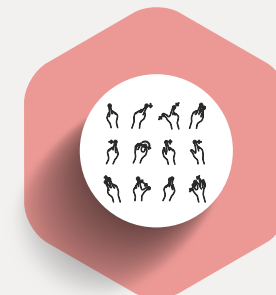


Scan a QR code to easily insert images into lessons, streamlining visual aid integration for enriched comprehension.

EFFORTLESS IMAGE INSERTION



The system offers teachers advanced multi-touch gestures for easy drawing, selecting, and interactive learning experiences, enhancing their teaching experience



MULTI-FINGER GESTURE CONTROL



FORMULA RECOGNITION



Formula Recognition simplifies complex equations, automatically solving and presenting clear solutions for teachers with ease.

INTELLIGENT SESSION SAVING



Rest assured, our intelligent session-saving feature protects your work by automatically saving every 60 seconds, ensuring teaching continuity without disruptions, even during power outages.

AI SEARCH

Provides quick suggestions and content generation prompts, including youtube videos and images.



Assists in drawing objects and generates a collection of doodles, web images, and AI generated images.



AI MAGIC PEN

Enables syllabus-based searches, customized by grade level and class pattern for efficient learning.



AI CURRICULUM NAVIGATOR



Our intelligent panels record classes, allow instant sharing via QR Code, and support WhatsApp sharing and auto email.



WHATSAPP SHARING & AUTO E-MAIL

Unlimited writing on the smart board with auto-scrolling creates seamless, uninterrupted Teaching experience for teachers.



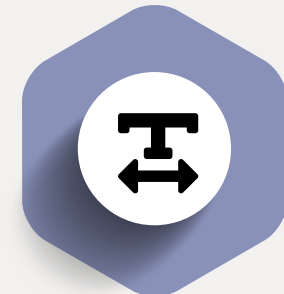
ENDLESS CANVAS/ AUTO SCROLL

INDIAN LANGUAGE COMPATIBILITY



Enhancing accessibility and inclusivity in the learning process, the Senses Interactive Intelligent Panel supports multiple Indian & Foreign languages

TEXT/SHAPE RECOGNITION WITH MEASUREMENT AUTO ALIGN OF TEXT

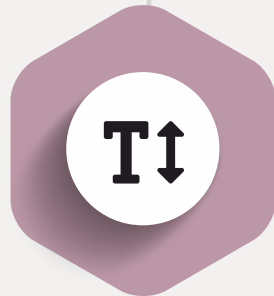


The technology of the Senses Interactive Intelligent Panel converts written/drawn text or shapes into precise, easily readable formats, enhancing efficient learning.

Our panel facilitates intelligent searches, allowing teachers to access online resources based on their chosen topic, thereby enhancing teaching experience with SMART SEARCH capabilities.



SMART SEARCH CAPABILITIES



TEXT EXTRACTION FROM IMAGE

Extract any text from the image inserted in SenseBoard with ease.

TEXT TRANSLATION



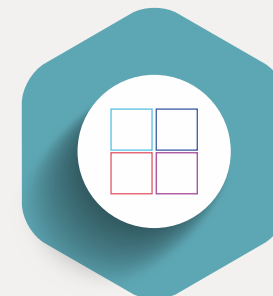
Translate any text added in SenseBoard to any Indian/Foreign languages and read them aloud.

In build AI to solve algebra, calculus, and other math problems. And provide step-by-step explanations.



MATH SOLVER

Teachers create multiple canvases for simultaneous student interaction, enabling collaborative problem-solving.



MULTI CANVAS

DICTIONARY



Show English definitions, synonyms, examples etc for the selected text. Option to select and copy the dictionary information to canvas is possible here.



UNLOCKING 3D INNOVATION

Experience a revolutionary shift in learning with our 3D Models. These models bring conceptual knowledge to life by offering interactive, 360° visualizations of content. Teachers will be able to grasp complex concepts with unprecedented depth, expanding their understanding through immersive teaching experiences.

ENHANCED LEARNING THROUGH 3D IMAGES

MORE THAN 5K 3D IMAGES
ARE ALREADY THERE IN SYSTEM.

Take your learning to the next dimension with our 3D Image Insert feature. This innovative capability allows teachers to insert 3D images, providing a hands-on approach to demonstrating topics. With the help of gestural recognition controllers, students can interact with and explore these 3D visuals, tapping into their creativity for a deeper and more engaging educational journey.





EMPOWERING VISUAL LEARNING

Unlock a world of enriched learning with our easy-to-use interface. Clear language and vibrant graphics make teaching effortless, allowing educators to draw shapes, solve equations, and perform hands-on experiments. **Explore Physics, Biology, Geography, and Chemistry like never before with over 5000 SensesAI-powered 3D models, designed for each grade level to deliver engaging, detailed lessons.** Fully aligned with the National Education Policy 2020, our content ensures an inclusive and immersive educational experience.

DEDICATED SERVICE AND SUPPORT

We take pride in promptly resolving client concerns within set timeframes, backed by a strong service network across India. Our commitment to service support is key to becoming the country's leading brand. Rest assured, our products and services will be cherished for years, and you can always rely on us for your solution needs.

SENSES TRAINING SUPPORT

We empower school teachers by offering up to 3 years of unlimited, complimentary training tailored to their needs. Our innovative approach ensures personalized support, with our team staying in constant communication to address specific subject and institutional requirements, fostering excellence in education.

LEARN, ENGAGE, EMPOWER

Transforming Education Together

UNLIMITED SOFTWARE UPDATES



We stay ahead of the educational curve by offering unlimited, free software updates that extend the life of your solutions. Released quarterly, these updates align with the evolving needs of educators, ensuring our technology remains cutting-edge.

SENSES INNOVATION



Feedback from educators fuels our drive for innovation and excellence. With Senses AI, we're revolutionizing teaching technology, helping you shape the future of education. Our commitment to continuous improvement is our lasting promise.

	65IV2000	75IV1000	86IV1000	98IV1000
SCREEN TYPE	LED with super bright backlit display Commercial Grade	LED with super bright backlit display Commercial Grade	LED with super bright backlit display Commercial Grade	LED with super bright backlit display Commercial Grade
Backlight Type	DLED	DLED	DLED	DLED
Glass bonding	ZERO bonding Technology	ZERO bonding Technology	ZERO bonding Technology	ZERO bonding Technology
Resolution	3840X2160, 4K	3840X2160, 4K	3840X2160, 4K	3840X2160, 4K
Response Time	< 4ms	< 4ms	< 4ms	<4ms
Contrast ratio	18000:1	35000:1	36000:1	36000:1
Brightness	450 cd/m2	550 cd/m2	600 cd/m2	600 cd/m2
Viewing Angle	178/178	178/178	178/178	178/178
Life	50,000 hrs	50,000 hrs	50,000 hrs	50,000 hrs
Audio Amplifier	In-built, BOSE amplifier 2.1 channel output			
Audio Speaker	2 X 20W and 20W sub-woofer			
Sensing Type	Infrared 20 points writing and 40 point touch			
Touch Response Time	<4ms (typ)	<4ms (typ)	<4ms (typ)	<4ms (typ)
Touch Accuracy	0.3 mm	0.3 mm	0.3 mm	0.3 mm
Surface Protection	Toughened glass Level 7 MOHS Std.			
Android Module	Android 14.0 (Upgradable), ARM A73 Octa Core + ARM A53 Octa Core CPU and GPU Mali G52, 8GB RAM, 128GB Flash, Wifi 2.4Ghz and 6.0Ghz, Bluetooth 5.2			
Windows Module	Windows 11 Pro, Intel Tiger Lake, i7 12th generation, 256 GB SSD, 8GB expandable upto 32GB, 1TB expandable upto 6TB, Intel Iris XE, WiFi 6, BT 5.2			
Inbuilt WiFi Access point	2.4GHz/5GHz, 802.11a/b/g/n/ac			
Inbuilt NFC authentication	ISO/IEC 14443 A / ISO/IEC 14443 B, MIFARE FeliCa, Read Write Speed - 106 To 424kbps			
Bluetooth	2.1+EDR/4.2/5.0	2.1+EDR/4.2/5.0	2.1+EDR/4.2/5.0	2.1+EDR/4.2/5.0
Connectivity	LAN RJ45, USB 2.0/3.0/3.1 Type C, Mini Display Port, Mic and earphone port, VGA Input, HDMI 1080p Input, HDMI 4K2K, SPDIF optical out			
Inbuilt Camera (Optional)	Sony CMOS 4800 Mega Pixel, FOV 103 degree, streaming and recording- 3840 X 2160 @ 30fps, 1280 X 720 @30fps, 1920 X 1080 @ 30fps			
Inbuilt Microphone	8 Array Microphone, Automatic Echo cancellation, Automatic gain control, Speech Enhancement, Distance of adaptation : upto 10-12 meters			
Fingerprint access control	Yes			
Power Requirement	90V - 300V AC 50/60HZ	90V - 300V AC 50/60HZ	90V - 300V AC 50/60HZ	90V - 300V AC 50/60HZ
Power Consumption	<340W	<600W	<700W	<700W
Operating Temperature	-10 to 55°C	-10 to 55°C	-10 to 55°C	-10 to 55°C
Operational Humidity	10% to 90 %	10% to 90 %	10% to 90 %	10% to 90 %
Dimensions L*H*W	1511.6 x 920.6 x 85.9 mm	1722.5 x 1034.6 x 87.1 mm	1967.9 x 1170.1 x 87.1 mm	2257 ± 2 x 1335 ± 2 x 118 ± 2 mm
Net Weight	44.1 Kg	54.9 Kg	69.15 Kg	113.5 Kg



FOR SALES ENQUIRIES



TechSens India

PHONE:

797 2448 494 | 973 0959 888

www.techsensindia.com

Office No. 1003-A, Sakar IX, Ashram Road,
Ahmedabad - 380009. Gujarat
254, Gruham Luxuria, Jahangirpura Olpad Road, Masma, Orma,
Surat - 394540. Gujarat



SUPPORT & TRAINING

TOLL FREE NO:

1800 120 566 566

Email: care@senseselec.com

www.senseselec.com



CORPORATE OFFICE

Senses Electronics Pvt. Ltd.
M No. 818, At Post Bhugaon,
Tal. Mulshi, Pune 412108.
Maharashtra, India

FOLLOW US



TECHNOLOGY PARTNER



SCAN TO EXPLORE



DISCLAIMER: The information in this brochure is provided as is and without any warranties of any kind, whether expressed or implied, including but not limited to, implied warranties of satisfactory quality, fitness for a particular purpose and/or correctness. The contents of this brochure are for general information purposes only and do not constitute advice. Senses Electronics Pvt. Ltd does not represent or warrant that the information and/or specifications contained in this brochure are accurate, complete, or current and specifically stipulates that certain interactive panel details and specifications contained in this brochure may differ in available models. Therefore, Senses Electronics Pvt. Ltd makes no warranties or representations regarding the use of the content, details, specifications, or information contained in this brochure in terms of their correctness, accuracy, adequacy, usefulness, timeliness, reliability, or otherwise, in each case to the fullest extent permitted by law.