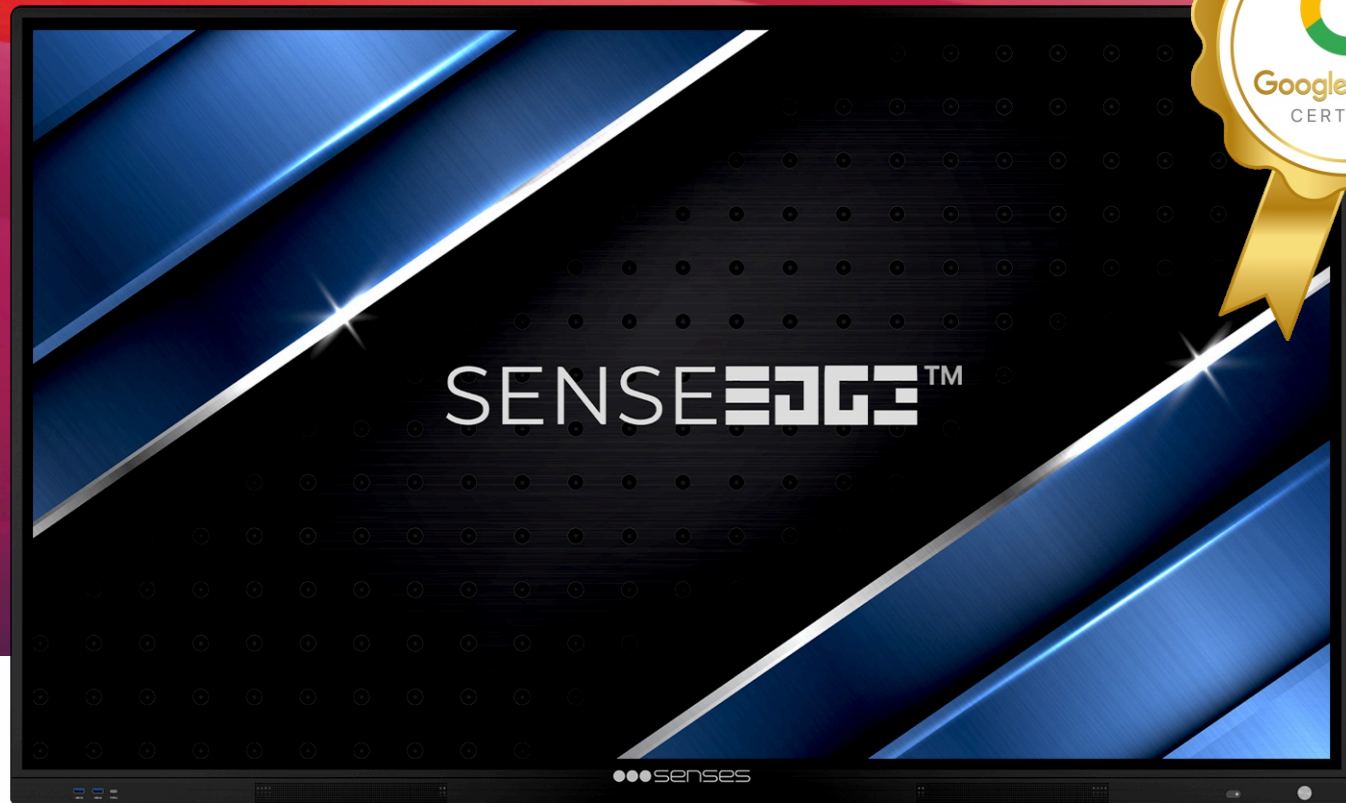


[illegible]

**AI-enabled Futuristic  
Interactive Panels,** shaping the  
future of education.

# SENSEEDGE™



The **Sense EDGE** Interactive Panel is now **Google EDLA Certified**, ensuring Seamless Integration with **Android 14** for Education Tools, **Enhanced Security**, and **Great Performance**.



Seamless Android 14 Intergration



Enhanced Security



Great Performance

*Today's educational scenario which is in a transitional mode makes it imperative for the students and the educators to be armed with the latest Ai aided tools to conquer the ever-evolving study material and Senses AI makes their life so easy that they don't have now to sweat over the technical jargon of today and days to come in the ever-changing syllabus. With Senses AI tool, educators of all levels are armed with the capability to simplify the teaching technique and make the students in front grasp and unknot the otherwise complications and knots of the subjects enabling them to feel the process of teaching and learning much easier and satisfying.*



# INNOVATIVE | ILLUSTRATIVE | INTERACTIVE

## THE SENSES APPROACH

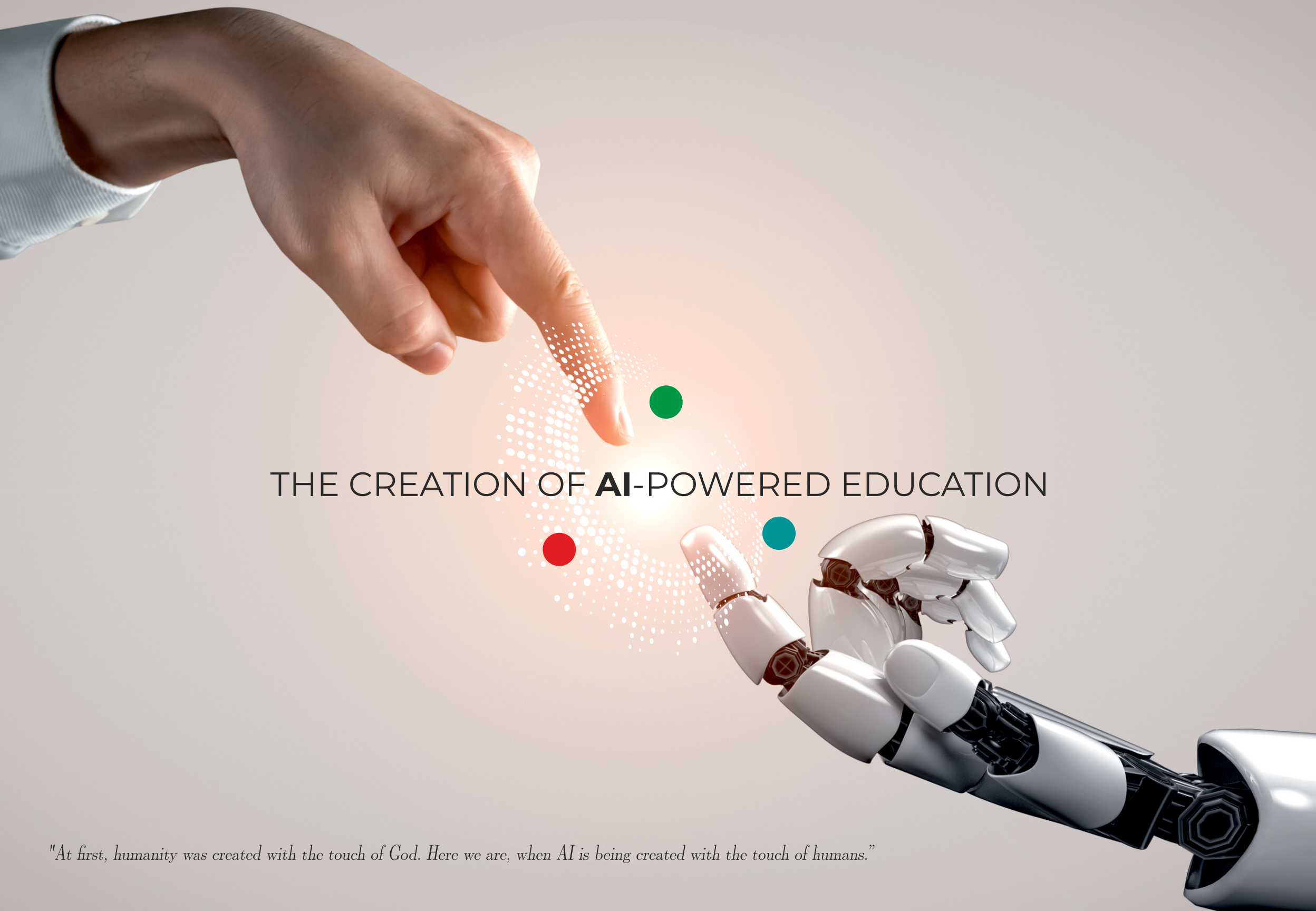


**Senses Electronics Pvt. Ltd.** is evolving as a fountainhead of innovative, creative and productive activities to develop a never so far available platform, totally revolutionized to make teaching and learning at cutting edge levels an easy task. It is our promise and real assurance that we would stand by our educators and dear students to convert tomorrow's classrooms more engaging and absorbing, paving way for their total success in the quest for excellence.

- **100000+** PANELS INSTALLED
- **8000+** INSTITUTION TRUSTED US
- **70% MARKET SHARE\***

(\*70% market share in private sector)





## THE CREATION OF **AI**-POWERED EDUCATION

*"At first, humanity was created with the touch of God. Here we are, when AI is being created with the touch of humans."*



# ADAPTIVE & INNOVATIVE

# -POWERED LEARNING

Text/Shape  
Recognition With  
Measurement



Multi Language  
Translation



Quick Search  
on Google, Youtube



Image, Video,  
PDF file Insertion



Live video  
Inputs



3D Shapes



AI Magic Pen



AI Curriculum  
Navigator



AI Search



*AI feature generating answers, images, translations, and questions can be asked in multiple Indian languages.*



# Senses Utility Suite

Manage your Education System Effortless



**SENSETALK™**

Seamless Classroom  
Communication



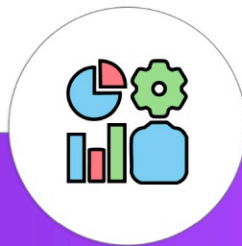
**SENSEWATCH™**

Real-Time Classroom  
Monitoring



**SENSECONNECT™**

Wireless Screen Sharing  
Made Easy



**SENSEMANAGE™**

Efficient Centralized  
Control



**SENSECAPTURE™**

Advanced Screen  
Recording Capabilities

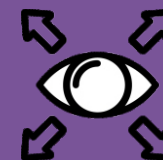




Powerful 2.1 channel sound using 2 front facing speaker & down firing Bose sub-woofer



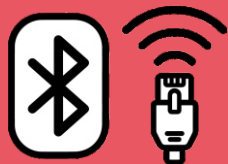
Whiteboard giving sharp, natural writing experience



Wide viewing angle upto 178 degree



Energy saving design, Max 300W, with OPS consumes <0.5W on standby

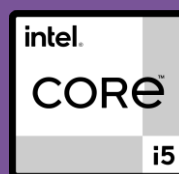


In-built Wi-Fi 6, Ethernet & Bluetooth 5.2



**Android 14** (Upgradable)  
**Google EDLA Certified**

Experience a robust, secure Android platform with Google EDLA certification and a high Geekbench score of 1300+ for exceptional performance.



Built-in state-of-the-art  
i5 CPU 12th Gen



Easy Wireless connectivity with laptops and mobile devices

In-built WiFi access point



Open platform, compatible with all e-learning contents

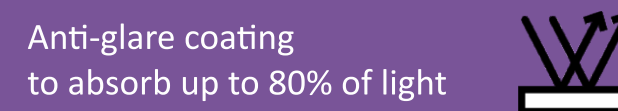


Supports any pen as small as tip of a ball pen



Toughened glass protection

World's thinnest bezel  
Interactive panel with complete metal body



Anti-glare coating to absorb up to 80% of light

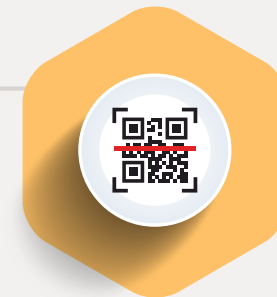


# THE SENSE EDGE ADVANT-EDGE

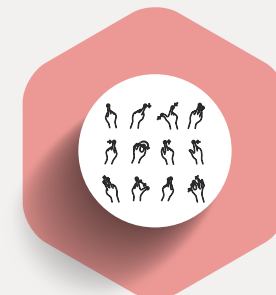


Scan a QR code to easily insert images into lessons, streamlining visual aid integration for enriched comprehension.

## EFFORTLESS IMAGE INSERTION



The system offers teachers advanced multi-touch gestures for easy drawing, selecting, and interactive learning experiences, enhancing their teaching experience



## MULTI-FINGER GESTURE CONTROL





## FORMULA RECOGNITION



Formula Recognition simplifies complex equations, automatically solving and presenting clear solutions for teachers with ease.

## INTELLIGENT SESSION SAVING



Rest assured, our intelligent session-saving feature protects your work by automatically saving every 60 seconds, ensuring teaching continuity without disruptions, even during power outages.

## AI SEARCH

Provides quick suggestions and content generation prompts, including youtube videos and images.



Assists in drawing objects and generates a collection of doodles, web images, and AI generated images.



## AI MAGIC PEN

Enables syllabus-based searches, customized by grade level and class pattern for efficient learning.



## AI CURRICULUM NAVIGATOR



Our intelligent panels record classes, allow instant sharing via QR Code, and support WhatsApp sharing and auto email.



### WHATSAPP SHARING & AUTO E-MAIL

Unlimited writing on the smart board with auto-scrolling creates seamless, uninterrupted Teaching experience for teachers.



### ENDLESS CANVAS/ AUTO SCROLL

### INDIAN LANGUAGE COMPATIBILITY



Enhancing accessibility and inclusivity in the learning process, the Senses Interactive Intelligent Panel supports multiple Indian & Foreign languages

### TEXT/SHAPE RECOGNITION WITH MEASUREMENT AUTO ALIGN OF TEXT



The technology of the Senses Interactive Intelligent Panel converts written/drawn text or shapes into precise, easily readable formats, enhancing efficient learning.



Our panel facilitates intelligent searches, allowing teachers to access online resources based on their chosen topic, thereby enhancing teaching experience with SMART SEARCH capabilities.



### SMART SEARCH CAPABILITIES



### TEXT EXTRACTION FROM IMAGE

Extract any text from the image inserted in SenseBoard with ease.

## TEXT TRANSLATION



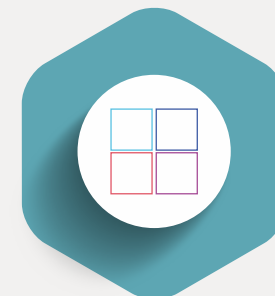
Translate any text added in SenseBoard to any Indian/Foreign languages and read them aloud.

In build AI to solve algebra, calculus, and other math problems. And provide step-by-step explanations.



### MATH SOLVER

Teachers create multiple canvases for simultaneous student interaction, enabling collaborative problem-solving.



### MULTI CANVAS

## DICTIONARY



Show English definitions, synonyms, examples etc for the selected text. Option to select and copy the dictionary information to canvas is possible here.



## UNLOCKING 3D INNOVATION

Experience a revolutionary shift in learning with our 3D Models. These models bring conceptual knowledge to life by offering interactive, 360° visualizations of content. Teachers will be able to grasp complex concepts with unprecedented depth, expanding their understanding through immersive teaching experiences.

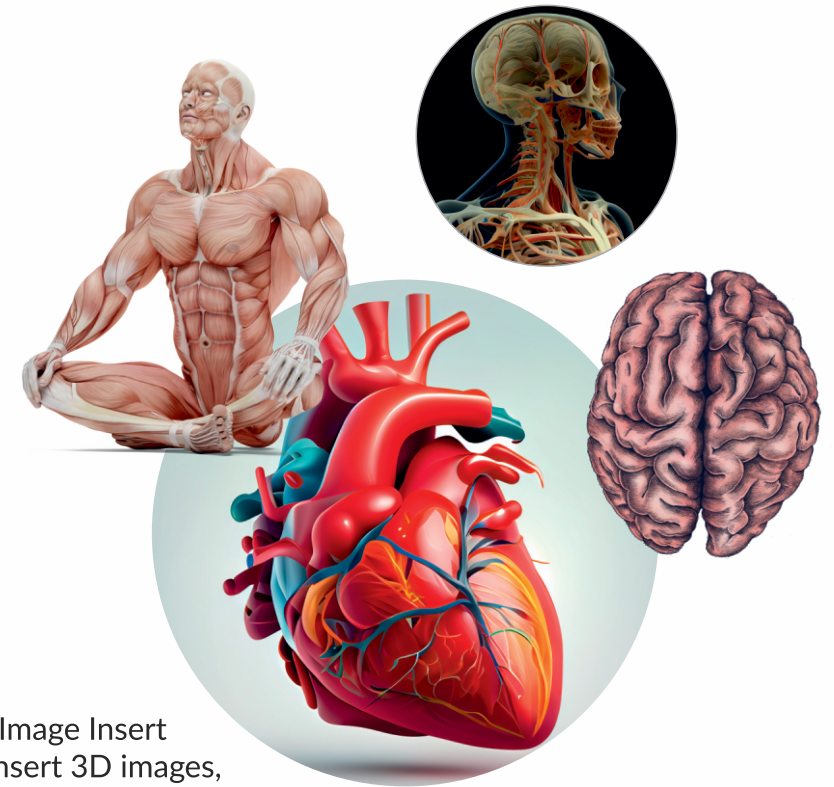
---

## ENHANCED LEARNING THROUGH 3D IMAGES

**MORE THAN 5K 3D IMAGES**  
ARE ALREADY THERE IN SYSTEM.

Take your learning to the next dimension with our 3D Image Insert feature. This innovative capability allows teachers to insert 3D images, providing a hands-on approach to demonstrating topics. With the help of gestural recognition controllers, students can interact with and explore these 3D visuals, tapping into their creativity for a deeper and more engaging educational journey.

---







## EMPOWERING VISUAL LEARNING

Unlock a world of enriched learning with our easy-to-use interface. Clear language and vibrant graphics make teaching effortless, allowing educators to draw shapes, solve equations, and perform hands-on experiments. **Explore Physics, Biology, Geography, and Chemistry like never before with over 5000 SensesAI-powered 3D models, designed for each grade level to deliver engaging, detailed lessons.** Fully aligned with the National Education Policy 2020, our content ensures an inclusive and immersive educational experience.



## DEDICATED SERVICE AND SUPPORT

We take pride in promptly resolving client concerns within set timeframes, backed by a strong service network across India. Our commitment to service support is key to becoming the country's leading brand. Rest assured, our products and services will be cherished for years, and you can always rely on us for your solution needs.

## SENSES TRAINING SUPPORT

We empower school teachers by offering up to 3 years of unlimited, complimentary training tailored to their needs. Our innovative approach ensures personalized support, with our team staying in constant communication to address specific subject and institutional requirements, fostering excellence in education.

## LEARN, ENGAGE, EMPOWER

Transforming Education Together

## UNLIMITED SOFTWARE UPDATES



We stay ahead of the educational curve by offering unlimited, free software updates that extend the life of your solutions. Released quarterly, these updates align with the evolving needs of educators, ensuring our technology remains cutting-edge.

## SENSES INNOVATION



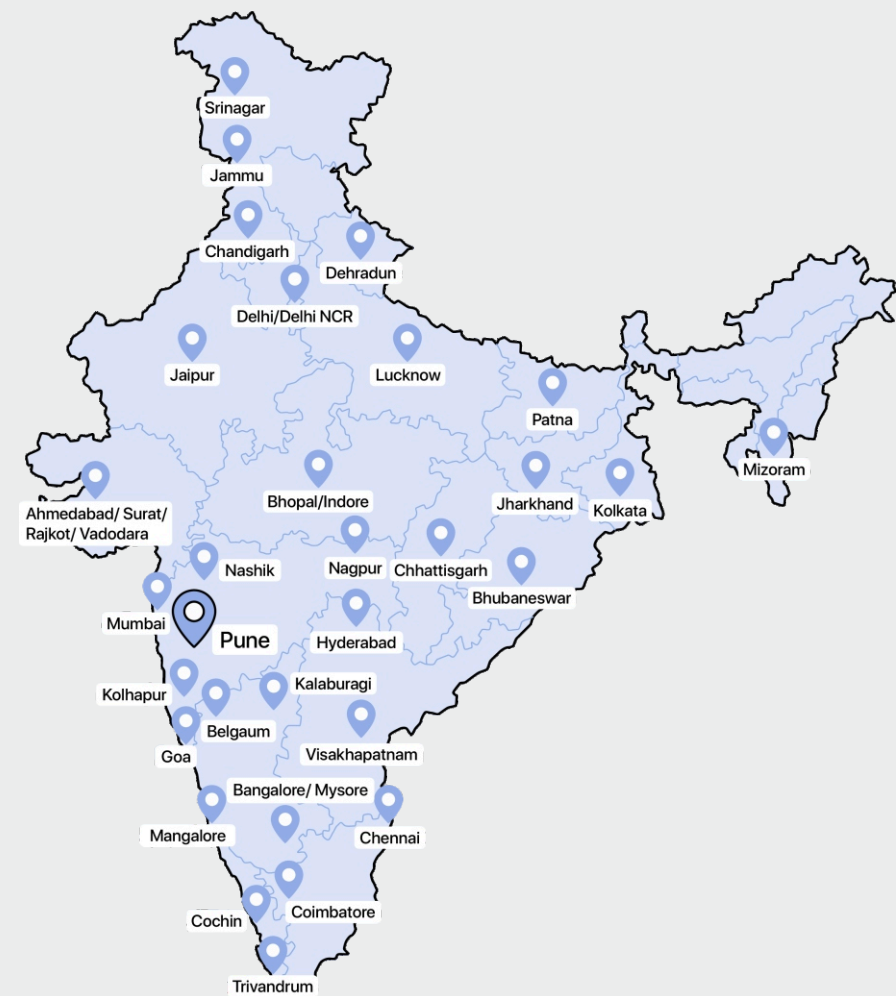
Feedback from educators fuels our drive for innovation and excellence. With Senses AI, we're revolutionizing teaching technology, helping you shape the future of education. Our commitment to continuous improvement is our lasting promise.



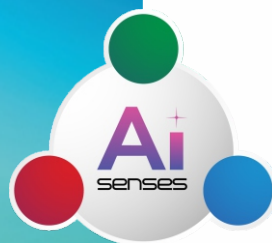
	65IP1000	75IP1000
SCREEN TYPE	LED with super bright backlit display Commercial Grade	LED with super bright backlit display Commercial Grade
Backlight Type	DLED	DLED
Glass bonding	ZERO bonding Technology	ZERO bonding Technology
Resolution	3840X2160, 4K	3840X2160, 4K
Refreshing frequency	60 Hz	60 Hz
Response Time	< 6ms	< 6ms
Contrast ratio	10000:1	15000:1
Brightness	350 cd/m2	450 cd/m2
Viewing Angle	178/178	178/178
Life	50,000 hrs	50,000 hrs
Audio Amplifier	In-built, TI amplifier 2.1 channel output	
Audio Speaker	2 X 16W , 15W Sub-Woofer	
Sensing Type	Infrared 20 points writing and 40 point touch	
Touch Response Time	<6ms (typ)	<6ms (typ)
Touch Accuracy	0.3 mm	0.3 mm
Surface Protection	Toughened glass Level 7 MOHS Std.	
Android Module	Android 14.0(Upgradable), Google EDLA Certified, ARM A73 Octa Core + ARM A53 Octa Core CPU and GPU Mali G52, 8 GB, 128 GB Flash	
Windows Module	Windows 11 Pro, Intel Tiger Lake, i5/i7 12th generation, 256GB SSD, 8GB expandable upto 32GB, 1TB expandable upto 6TB, UHD 630, WiFi 6, BT 5.2	
Bluetooth	2.1+EDR/4.2/5.0	2.1+EDR/4.2/5.0
Connectivity	LAN RJ45, USB 2.0/3.0/3.1 Type C, Mini Display Port,Mic and earphone port, VGA Input, HDMI 1080p Input,HDMI 4K2K, SPDIF optical out	
Power Requirement	90V - 300V AC 50/60HZ	90V - 300V AC 50/60HZ
Power Consumption	<340W	<600W
Operating Temperature	-10 to 55°C	-10 to 55°C
Operational Humidity	10% to 90 %	10% to 90 %
Dimensions L*H*W	1482 x 891.4 x 119.2 mm	1716.5 x 1031.8 x 120.4 mm
Net Weight	39.4 Kg	54.1 Kg

## REGIONAL OFFICES

Senses Electronics is present PAN India and has been providing Intelligent Interactive Panels for classrooms across the country. We have regional offices in the following locations for sales, support and service.



**INDIA’S NO. 1 RANKED**  
**INTERACTIVE EDUCATION PANEL**



#### CORPORATE OFFICE

**Senses Electronics Pvt. Ltd.**  
M No. 818, At Post Bhugaon,  
Tal. Mulshi, Pune 412108.  
Maharashtra, India



#### FOLLOW US



#### FOR SALES ENQUIRIES



TechSens India

#### PHONE:

797 2448 494 | 973 0959 888

[www.techsensindia.com](http://www.techsensindia.com)

Office No. 1003-A, Sakar IX, Ashram Road,  
Ahmedabad - 380009. Gujarat  
254, Gruham Luxuria, Jahangirpura Olpad Road, Masma, Orma,  
Surat - 394540. Gujarat



#### SUPPORT & TRAINING

#### TOLL FREE NO:

1800 120 566 566

Email: [care@senseselec.com](mailto:care@senseselec.com)

[www.senseselec.com](http://www.senseselec.com)

#### TECHNOLOGY PARTNER



#### SCAN TO EXPLORE



DISCLAIMER: The information in this brochure is provided as is and without any warranties of any kind, whether expressed or implied, including but not limited to, implied warranties of satisfactory quality, fitness for a particular purpose and/or correctness. The contents of this brochure are for general information purposes only and do not constitute advice. Senses Electronics Pvt. Ltd does not represent or warrant that the information and/or specifications contained in this brochure are accurate, complete, or current and specifically stipulates that certain interactive panel details and specifications contained in this brochure may differ in available models. Therefore, Senses Electronics Pvt. Ltd makes no warranties or representations regarding the use of the content, details, specifications, or information contained in this brochure in terms of their correctness, accuracy, adequacy, usefulness, timeliness, reliability, or otherwise, in each case to the fullest extent permitted by law.